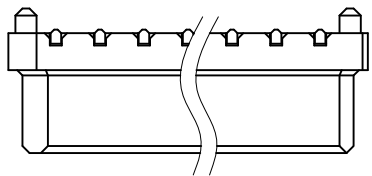
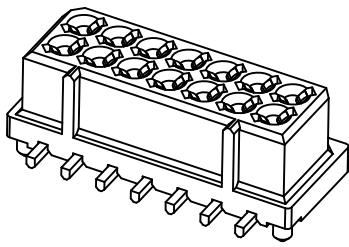


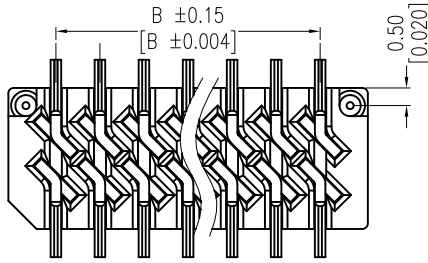
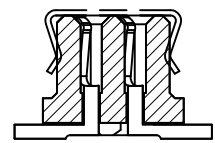
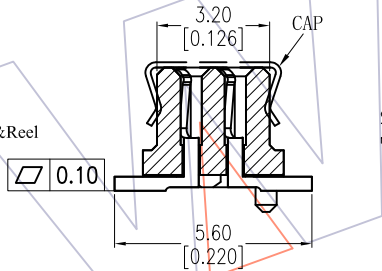
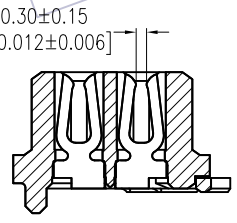
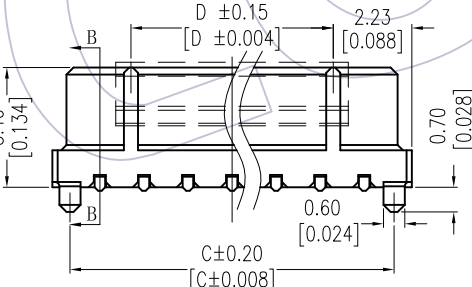
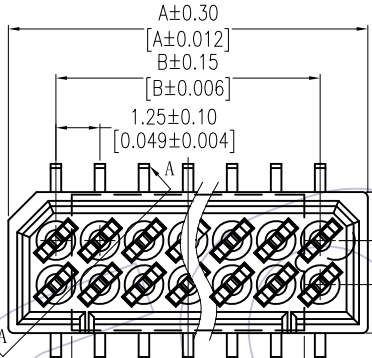
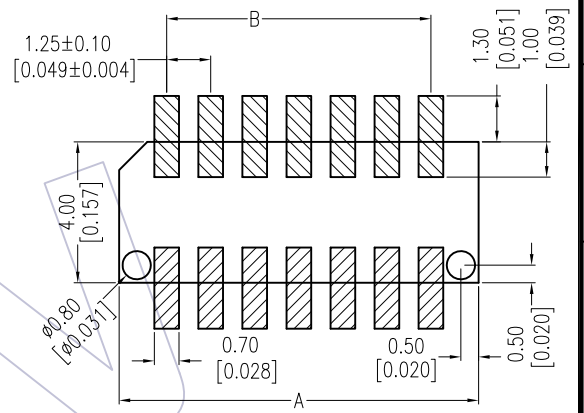
HSF

NOTES:
 Voltage Rating: 50V AC/DC
 Current Raing: 0.5AMP
 Contact Resistance: 20mΩ max
 Withstand Voltage: 500V AC/Minute
 Insulation Resistance: 500MΩ min
 Operation Temperature: -40°C to +105°C

Contact Material: Phosphor Bronze
 Contact Plating: Sn OR Au OVER Nickel
 Insulator Material: PA9T+33%GF UL94V-O BLACK



Recommended P.C.B Layout (Top Side)
 (PCB BOARD TOLERANCE ±0.05)



Ordering Information

3651-S XXX - 034 XX R0X

- No.of Pins
 006: 06 Pin
 010: 10 Pin
 012: 12 Pin
 014: 14 Pin
 016: 16 Pin
 018: 18 Pin
 020: 20 Pin
 022: 22 Pin
 024: 24 Pin
- Plating
 G0=Gold Flash
 G3=10u"Gold
 G4=15u"Gold
 G5=30u"Gold
 SN=Tin
- Packing
 R=Tape&Reel

Pos	Part No.	DIM F
12-16PIN	CAP2300-M204	3.40
18-24PIN	CAP2300-M202	6.60

3651-SXXX-034XXR02	W/O POST
3651-SXXX-034XXR01	W/T POST

D	C	B	A	Pos.
11.99	15.45	13.75	16.45	24
10.74	14.20	12.50	15.20	22
9.49	12.95	11.25	13.95	20
8.24	11.70	10.00	12.70	18
6.99	10.45	8.75	11.45	16
5.74	9.20	7.50	10.20	14
4.49	7.95	6.25	8.95	12
3.24	6.70	5.00	7.70	10
0.74	4.20	2.50	5.20	6

REV	DATE	MODIFICATION DESCRIPTION	CHANGE	OPERATION	DRAW	DATE	SCALE	FIT	PART NO.
				X.X	±0.40	DingWenMin	2016.10.20	UNIT	mm
				X.XX	±0.25	CHECK	DATE	SIZE	A4
				X.XXX	±0.15	APPROVE	DATE	SHEET	1/1
				Angle	± 3'			PROJ.	⌀
				DIM	TOL				
A0	2016.10.20	NEW	----						3651-SXXX-034XXR0X
									TITLE: 1.25mm BTB FEMALE 180° SMT, H=3.4
									Customer NO.



WCON-Dongguan
 Tel: +86 769 85358920
 Fax: +86 769 85358915
 E-mail: sales@wcon.com

WCON-Kunshan
 Tel: +86 512 57468408
 Fax: +86 512 57468468
 E-mail: salesks@wcon.com